

H2H Network's package of humanitarian support services: Conflict in Lebanon

Overview

In response to the recent escalation of the conflict in Lebanon, the H2H Network is funding eight H2H Members to provide essential services to strengthen the humanitarian response in Lebanon. These services address critical needs in the aid delivery, including LGBTIQ+ inclusion, rapid needs assessments, damage mapping, and security management. The initiatives also target communication resilience, diaspora engagement, real-time data accessibility, and community-driven feedback to ensure an effective, inclusive, and accountable response.

The consequences of the conflict in Lebanon, triggered by the Israeli military campaign against Hezbollah that began in September 2024, left over 60% of the population in need of humanitarian assistance. Despite a ceasefire implemented in November 2024, the conflict resulted in widespread destruction across the country, with vital infrastructure, including severely disrupted healthcare and water systems, destabilizing Lebanon's already fragile economy. Nearly one million people were displaced during the conflict, and while most internally displaced persons (IDPs) returned to their areas of origin, the challenges in regaining access to their homes remain. This demands efficient coordinated humanitarian action to provide emergency relief while also supporting early recovery.

Humanitarian
Action Support



This H2H Fund allocation is supported by UK aid – from the British people. The H2H Network is also supported by USAID and Sida.

H2H services offered

h

h

The New Humanitarian: The Lebanon Listening Project

Objective:

Informing humanitarian response measures to be more effective, inclusive, and accountable by addressing the needs of marginalized groups and amplifying their voices, while enabling feedback on response quality and impact.

Services and resources:

A dedicated page on TNH's website will focus on the humanitarian impact of the Israel-Hezbollah conflict in Lebanon and the concept of listening, and gather the following reporting:

- A series of displacement diaries that profiles people who have been displaced by the violence in Lebanon, sharing their experience of what they have lost and what they need from the response, published in both English and Arabic.
- Reported content on the situation for affected populations and exploring the successes and gaps in the humanitarian response.

Annie Slemrod, Middle East Editor,
annie@thenewhumanitarian.org

Emmeline Booth, External Relations Lead,
emmeline@thenewhumanitarian.org



CDAC Network: Strengthening Communication Resilience

Objective:

Improving the humanitarian information ecosystem and enabling a more inclusive environment by strengthening existing local and diaspora networks. This aim to provide accurate and actionable information for crisis-affected communities, and humanitarian response actors

Services and resources:

- A snapshot report on the status of community engagement and accountability in Lebanon.
- Technical training to targeted actors on CCEA.
- Host country-level crisis calls on harmful information.
- Recommendations on countering misinformation, disinformation and hate.

Syma Jamil, Programme Coordinator,
syma.jamil@cdacnetwork.org



RedR UK: Salāmah - Security Adaption

Objective:

Empowering individual responders and organizations to provide safe, effective, and suitable support to the humanitarian crisis in Lebanon by building security management and personal safety capacity to local responders.

Services and resources:

- Rapid Learning Needs Assessment report, translated into Arabic, published and available to responders, outlining key capacity gaps and learning needs in the Lebanon conflict response.
- Specialized training and coaching for local organization representatives
- In Security Management for Humanitarians.
- Complete short on-line facilitated training on Personal Security (Staying Effective) for responders in Lebanon.

Mohammed Bashein, Programmes
Coordinator, mohammed.bashein@redr.org.uk



H2H services offered

h

h

Data Friendly Space: Unlocking the Accessibility of Real-Time Data and Targeted Analysis

Objective:

Enhance humanitarian response quality and accountability through access to real-time information and structured analysis by the Lebanon SituationHub, powered by GANNET, a generative AI platform for humanitarian collaboration and quick decision-making.

Services and resources:

The Lebanon SituationHub, purpose-built for this humanitarian context which integrates:

- Context-specific data with established humanitarian analysis frameworks (for operational settings, as well as sectoral analysis).
- Timely information through expert analysts, acting as “humans-in-the-loop” that curate data sources (incorporating trusted local sources) and refine outputs, ensuring reliable, timely information delivery.
- In-depth analytical products.

Helene Pelisson, Senior Analyst,
helene@datafriendlyspace.org



Humanitarian OpenStreetMap Team: Collaborative Approaches to Mapping Damage in Lebanon

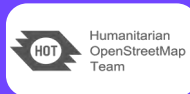
Objective:

Fill data gaps on infrastructure mapping for humanitarian use cases. Providing a crowdsourced Building Footprints Dataset for more accurate damage datasets, and a user guide of open damage analyses conducted in Lebanon.

Services and resources:

- Building Footprints Dataset, manually checked to ensure quality.
- Protection-dependent map, highlighting key infrastructure at risk of damage, including heritage sites, schools, and health facilities.
- Damage analysis user guide, an in-depth guide providing an overview of damage assessment methodologies, designed to help users understand data inputs and methodological considerations. The guide supports diverse applications, from advocacy efforts to operational planning

Jessie Pechmann, Global GIS Manager,
jessie.pechmann@hotosm.org



IMPACT Initiatives: Informing emergency planning and prioritization

Objective:

Monitor humanitarian needs in conflict-affected and displaced areas to assess the impact on essential services, identify priority needs, and provide actionable insights for emergency planning and effective targeting of vulnerable populations.

Services and resources:

- Data collection and assessments on displacement's impact on access to services and multi-sectoral needs for IDP and non-displaced affected communities.
- Humanitarian Situation Monitoring in areas affected by conflict, focusing on the South, Nabatieh, Beqaa and Baalbek-Hermel. It includes indicators on access, functionality and damage to critical services, as well as AAP indicators on priority needs and response effectiveness.
- Remote sensing analysis using high-resolution imagery, to be integrated into an analysis that contextualizes findings related to access to services.

Marta Piekarczyk, Research Manager,
Marta.Piekarczyk@impact-initiatives.org



H2H services offered

h

h

Diaspora Emergency Action & Coordination (DEMAC): Strengthening Lebanese Diaspora Efforts

Objective:

Improving the Lebanese diaspora's humanitarian response in Lebanon by enhancing coordination, communication, and capacity building among diaspora groups and humanitarian actors.

Services and resources:

- Real-Time Review (RTR), a comprehensive review of the Lebanese diaspora's current response, identifying gaps and opportunities for enhanced collaboration with local actors and humanitarian organizations.
- Diaspora Liaison Coordinator to facilitate communication and collaboration between the diaspora and local actors, ensuring a more coordinated response on the ground.
- Workshops and regular online meetings, to foster trust and collaboration among diaspora organizations and conduct regular online meetings to maintain ongoing communication and coordination.
- Capacity-building training sessions and sponsorships to diaspora groups, enhancing their skills in effective humanitarian response and supporting their participation in joint initiatives with local actors.
- Introducing RIMS (Referral Information Management System) for diaspora groups on how to use RIMS for accurate data entry and referrals, enabling real-time tracking of evolving needs in Lebanon.

Yaman Salam, Emergency Coordinator
(Project Lead), yaman.salam@drc.ngo



Edge Effect: Strengthening LGBTIQ+ National Coordination and Inclusion

Objective:

Improving LGBTIQ+ inclusion in mainstreamed and targeted humanitarian initiatives by addressing the needs of LGBTIQ+ communities and identifying gaps in the response, while promoting equity and supporting local organizing.

Services and resources:

- Technical guidance and advice for the inclusion of LGBTIQ+ communities in the response, through coordination with the LGBTIQ+ Task Force (TF)
- Communication materials, reports, and briefs pertaining to the needs and challenges of LGBTIQ+ individuals. This includes monthly sitreps and work on building a better understanding of LGBTIQ+ community-based response (CBR) and how it might interface with formal humanitarian response.
- Tools and other resources supporting TF members and non-members to ensure an inclusive accountability (AAP) process related to the Lebanon LGBTIQ+ community. This includes the production of a service-level diagnostic tool piloted with members of the TF and aligned with TF's priorities.
- A rapid-response small grants programme for LGBTIQ+ CSOs in Lebanon to address urgent, unforeseen humanitarian needs.

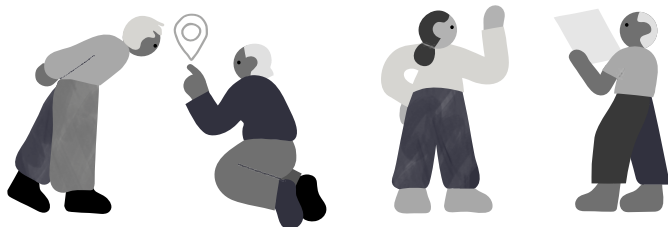
Ribal Maatouk, Programs Officer,
ribalmaatouk@edgeeffect.org



What is the H2H Fund?



The H2H Fund brings greater quality, efficiency and accountability to humanitarian response through targeted funding. Rapid interventions by the H2H Network have been shown to contribute to greater effectiveness of humanitarian responses to crises as diverse as drought in the Horn of Africa, the earthquake in Türkiye and Syria, and the conflict in Sudan. Through rapid disbursement of flexible funding, it enables H2H Members to provide specialized services in specific crises and addresses key gaps and priorities in the overall humanitarian response. The H2H Fund is activated in response to both sudden onset crises and spikes in protracted crises.










The need

Too often, traditional humanitarian funding mechanisms are slow to move, causing delays and challenges, especially for smaller organizations providing specialized services. For these organizations, raising funds requires significant time and effort for fundraising and grant management. Donors must also process many small grants with the associated burden of risk management and administration. The H2H Fund bridges this divide, ensuring that technical expertise and services are quickly funded and available to humanitarian actors to improve aid delivery from the start.

The process

The H2H Fund activation process is coordinated by the H2H Team. It involves the following steps:

-  1 Assessing the scope and severity of the crisis, as well as the need for the type of specialized services provided by H2H Members
-  2 Coordinating with humanitarian actors who operate in the context to select the most relevant and impactful projects to design te package of services
-  3 Managing all aspects of the grant agreements, such as contracts, financial transactions and reporting
-  4 Designing an integrated package of H2H services to address the gaps and cross-cutting priorities in the humanitarian response
-  5 Supporting the collaboration between H2H Members to maximize the impact of the service package beyond individual projects
-  6 Coordinating with humanitarian stakeholders in-country to ensure that the resources produced are accessed and utilized
-  7 Facilitating learning and evaluation to review the impacts, achievements, and challenges of the intervention

What is an H2H service package?

All services funded by the H2H Fund are put together as a package, designed to inform and strengthen the wider humanitarian response. They are free of charge and accessible to all humanitarian responders. Services provided by H2H Members include specialized tools, innovative resources, and products that can be categorized into four main areas:

1. Data, Information Management and Analysis
2. Community Engagement and Accountability
3. Security, Logistics, and Programme Support
4. Quality and Sector Professionalization

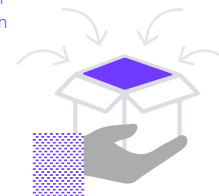
To date, the H2H Fund has created 20 humanitarian service packages to support response actors in the immediate aftermath of natural disasters and rapid conflict escalation.

Quality and Sector Professionalization

Community Engagement and Accountability

Security, Logistics, and Programme Support

Data, Information Management and Analysis



History of H2H Fund activations



Total Funds Allocated

6.8M CHF

Average Grant Amount

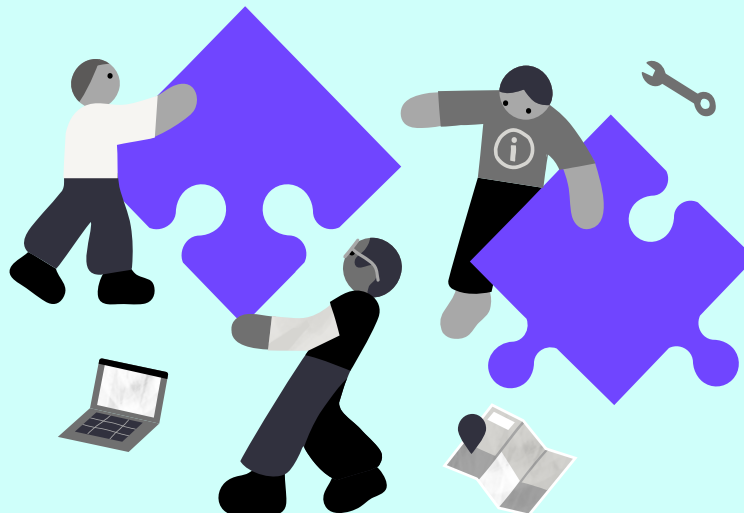
54k CHF

Projects Funded

126

Members Funded

30



The H2H Network

We bring together specialized, independent humanitarian service providers who enable efficient, impactful and accountable aid during crisis, by supporting humanitarian-to-humanitarian (H2H) services for the wider system.

These independent, cross-cutting tools and services are well-suited to address many of the gaps and challenges that continue to hamper humanitarian action in specific emergencies, as well as contributing to change at the system-level.

To date, the H2H Fund has been supported by SIDA, UK aid, USAID, as well as the Disasters Emergency Committee (DEC).